



*Franklyn
James*

Pointers Close, E14 3AP

£3,500 Per Calendar Month

*Franklyn
James*



Pointers Close, E14 3AP

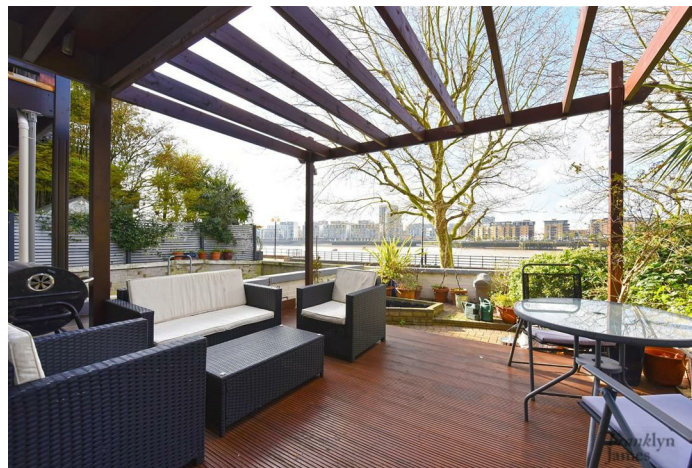
£3,500 Per Calendar Month

HMO REGULATED!

Rare to the market is this three-bedroom, end of terrace townhouse which is perfect for professional sharers. Located within moments of the River Thames river front and Thames pathway, the house comprises a large kitchen, spacious reception room and garden, four double bedrooms with fitted wardrobes and two-bathrooms. The Greenwich foot tunnel is only moments away, granting easy access to one of London's most vibrant town centres, offering ample restaurants, bars and shops. Mudchute and Island Gardens DLR stations are also minutes away, as well as local bus routes, offering easy access into Canary Wharf, the City and Stratford. Call now to arrange your viewing.

Description

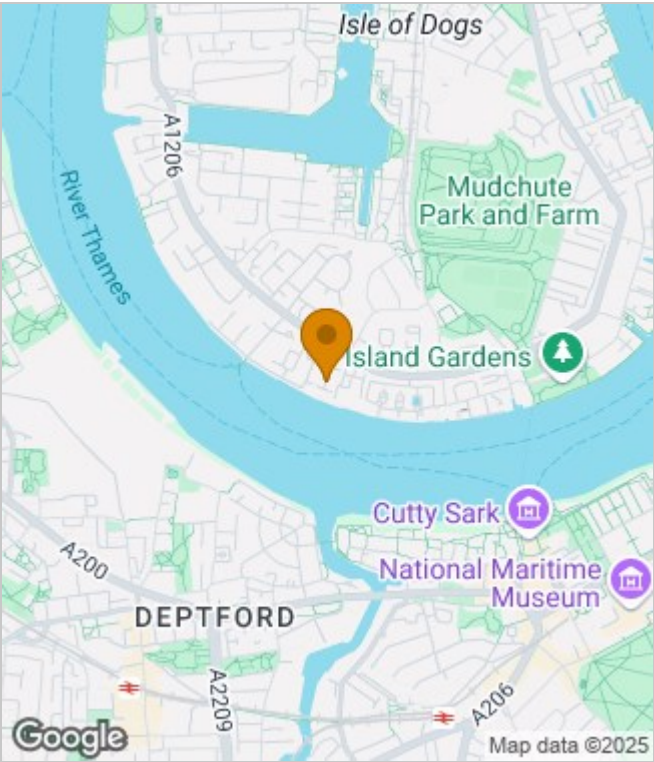
- Three double bedrooms
- Riverside living
- Perfect for professional sharing
- Spacious accommodation
- Easy access to Canary Wharf
- Available now
- Furnished



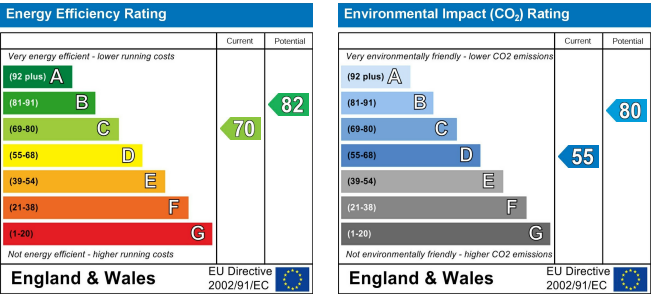
Furnished
Council Tax Band: E
Available: 9th April 2025



Area Map



Energy Performance Graph



These particulars, whilst believed to be accurate are set out as a general outline only for guidance and do not constitute any part of an offer or contract. Intending purchasers should not rely on them as statements of representation of fact, but must satisfy themselves by inspection or otherwise as to their accuracy. No person in this firms employment has the authority to make or give any representation or warranty in respect of the property.